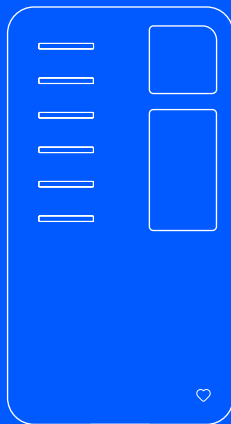


easee



**EN** User guide / Installation guide

**DE** Benutzeranleitung / Installationsanleitung

# Equalizer Amp

# English

Deutsch 10

## Table of contents

### Introduction

Introduction	3
Product overview	3
Safety instructions	4
Technical specifications	4

---

### Installation

Installation instructions	5
---------------------------	---

---

### Daily use and operation

Practical details	9
-------------------	---

#### **IMPORTANT:**

Read carefully before use. Keep for future reference. When passing on the product, ensure this guide is also passed on.

# Introduction

## Intended use

This product is intended to be used as a measurement device that, together with an Easee Equalizer, will optimize energy utilization in buildings. It will enable automatic load balancing between the Easee Charging Robot(s) and the building for those that do not have a smart meter installed.

## Operating conditions

The Equalizer Amp must be connected to an Equalizer with the provided RJ12 cable.

For installation and operation purposes, a smartphone with internet connection is needed.

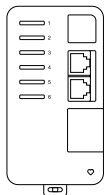
Plug not included for the power cable.

## Optimal performance

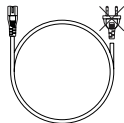
The Equalizer Amp together with the Easee Equalizer makes it possible to charge smarter, safer and faster without the need of a smart meter, if the installation is scaled accordingly.

# Product overview

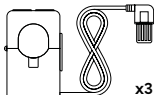
## Equalizer Amp



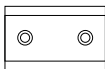
## Power cable



## Current sensors



## DIN bracket



## Expansion connector



## Safety instructions

**Read the entire manual carefully before installing and operating the product.**

**Observe the following instructions:**

- Do not use the product if it is damaged or does not function properly.
- Always have any repair work carried out by an authorised electrician and in accordance with local requirements.
- This product is intended for indoor use in dry locations only. If placed outside the house, it must be installed inside a cabinet protected from the weather.
- Do not immerse the product in water or other liquids.
- Avoid direct sunlight or heat exposure.
- Keep product away from open flames and extreme heat.
- Make sure that children do not play with the product.

## Technical specifications

### General

Dimensions (mm): H: 95 x W: 51 x D: 30  
Operating temperature: -20 °C to +50 °C  
Weight: 105 g  
Supply: 85-264 V AC  
Installation system: TT, IT or TN  
Phases: 1- or 3-phase

### Current sensors

Type: CT clamps  
Operation range: 0 - 100 A  
Conductor diameter: max. 16 mm  
Cable length: 1 m

### Protection

Degree of protection: IP30  
Insulation class: II  
Overvoltage category: OVC II

### Connectivity

2x RJ12 connectors  
6x sensor slots  
1x 12 pin expansion port

# Installation instructions

**WARNING!** This product shall only be installed, repaired or serviced by an authorised electrician. All applicable local, regional and national regulations for electrical installations must be respected.

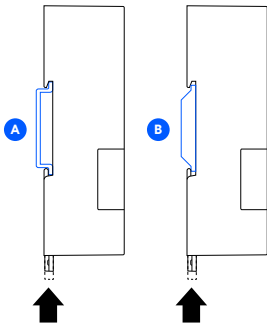
**WARNING!** Turn off the power before you begin the installation. Use extreme caution and follow instructions carefully.

Install the Installer App on your phone by visiting [easee.com/installer-app](https://easee.com/installer-app) or scanning the QR code below.



## 1 Equalizer Amp Mounting

1. Mount the Equalizer Amp on the DIN rail (A) inside the fuse cabinet. If that's not possible, attach the included DIN bracket (B) to a surface and then mount the Equalizer Amp.



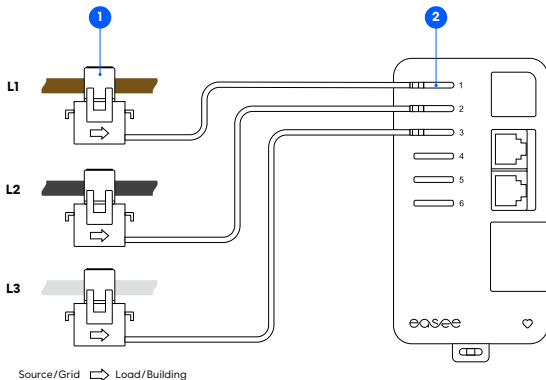
B

## 2 <sup>Current sensors</sup> Attaching

1. Attach current sensor(s) around each conductor either in front or behind the main fuse. The arrow on the sensor must point towards the load.

2. Plug the current sensors, L1, L2 and L3, into their respective terminals 1, 2 and 3.

**NOTICE!** Depending on national standards, the colour of the cables can vary from illustration.



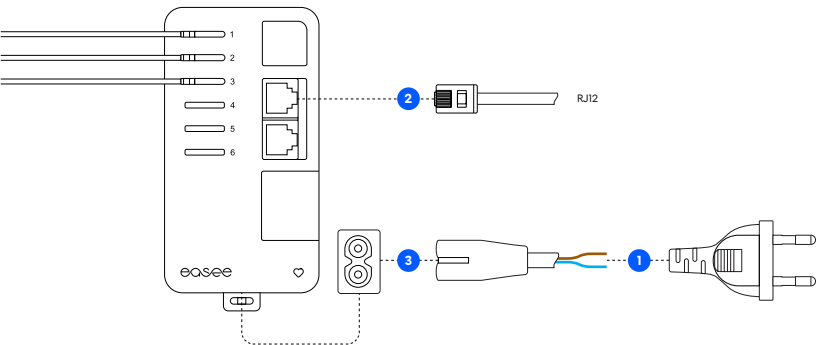
# 3 Equalizer Amp

## Connecting

1. Connect the included power cable to a suitable power source. A separate fuse with a maximum rating of 16 A is recommended.
2. Find the RJ12 cable in the Equalizer box and connect it to an RJ12 terminal on the Equalizer Amp. The bottom RJ12 terminal is for connecting multiple Equalizer Amps.

**CHECK LIST!** Before powering up the Equalizer Amp, make sure that:

- The current direction is correct on the current sensors.
  - The charging sites and the Equalizer Amp have the same phase sequence.
  - The L1 current sensor is plugged into terminal 1, L2 sensor in terminal 2 and L3 sensor in terminal 3 on the Equalizer Amp.
3. Power up the Equalizer Amp. You should see a flashing ♥ at the bottom right corner of the device.

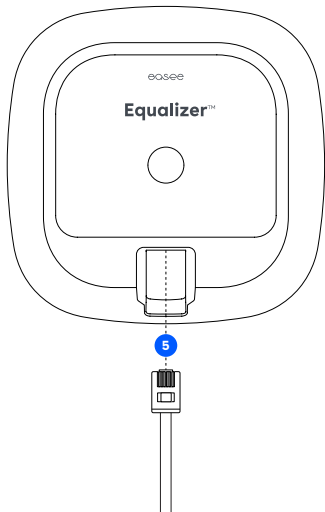
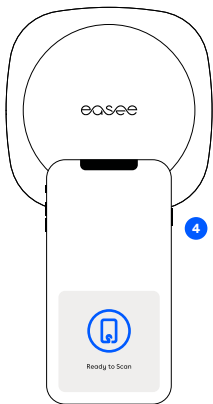


## 4 Equalizer Setting up

Use the Installer App to configure the Equalizer on a site with multiple circuits.

Before starting, make sure that the Equalizer and the master charger(s) are connected to the same WiFi network. Also make sure you have NFC enabled on your mobile phone.

1. Go to "Ongoing sites", or "Update existing site", and select your site.
2. Under "Site structure", select "Add Equalizer".
3. Enter the WiFi information (the same network the chargers are connected to).
4. Hold the mobile phone to the front of the Equalizer to transmit the WiFi details. The Equalizer cannot receive the information if it's powered on.
5. Connect the Equalizer to the Equalizer Amp with the RJ12 cable.





## Practical details

### LED colours meaning

White, fast flashing – Booting

White, breathing every 10s – Normal operation

Red / white, switching – No WiFi added

Red, flashing – No data from power meter

Red, breathing every 10s – Error

Purple, breathing every 10s – Offline operation

### Warranty

The device is free from material defects and is in accordance with laws and regulations for consumer protection in the country where the product is purchased. All correctly installed Easee hardware is covered by our 3 years\* limited warranty.

\*Some countries may have extended warranty.

### Standards

Hereby, Eease AS declares that the Equalizer Amp is in compliance with Low Voltage Directive 2014/35/EU, EMC Directive 2014/30/EU and RoHS Directive 2011/65/EU.

The full text of the EU Declaration of Conformity is available at the following internet address: **[easee.support](https://www.easee.com/easee.support)**.

### Maintenance

This product requires no maintenance. If it needs to be repaired, please contact your Eease supplier.

### Storage

The product should be stored in a tempered, dry and well-ventilated area in order to preserve the packaging and its contents. Relative humidity should not exceed 80 % and no corrosive gas should be present. Storage or transportation environment should never exceed the limits provided in the technical specifications.

### Disposal



A crossed-out dustbin symbol indicates that a product and its accessories must not be disposed of in household waste at the end of their lifecycle. For the return of old devices, free collection and acceptance points may be available in your vicinity. Observe local regulations for correct and environmentally friendly disposal.

### Returns and complaints

Contact your distributor or Eease Customer Support at **[easee.support](https://www.easee.com/easee.support)** regarding the return and complaint of your product.

THIS DOCUMENT CONTAINS INFORMATION THAT IS SUBJECT TO CHANGE WITHOUT NOTICE.

The latest version of this publication can be downloaded at <http://easee.support>

No part of this publication may be reproduced or transmitted in any form or by any means, electronic or mechanical, including, but not limited to, copying, recording, retrieving data, or computer networks without the written permission of Easee AS.

Easee and all other Easee product names and slogans are trademarks or registered trademarks of Easee AS. Easee products can be protected by one or more patents.

All other products and services mentioned may be trademarks or service marks of their respective owners.

Illustrations of the product and user interface are exemplary and may differ from the actual appearance.

December 2022 - Version 1.01  
© 2022 by Easee AS. All rights reserved.

#### Contact details

Easee AS  
Grenseveien 19  
4313 Sandnes, Norway  
Org. nr: 920 292 046

You can find additional contact details for your country at [easee.com](http://easee.com).

---

easee

Easee AS  
Grenseveien 19  
4313 Sandnes, Norway

[www.easee.com](http://www.easee.com)